



CCG MOT Report : B83018 - Dr Roberts & Partners

Financial Year 2014/2015

April 2014 - December 2014

This report has been compiled by **Yorkshire and Humber Commissioning Support**.
This report includes the practices that comprise Bradford Districts CCG.
Please contact Susheel Kumar Sharma on Susheel.Sharma@nhs.net or 01274 237499 for more information.
Data Sources: SUS, Prescribing

Quarterly MOT Report Contents

1. Secondary Care Activity and Financial Summary	3
Figure 1.1 All secondary care activity for all providers for the current fiscal year April 2014 - December 2014 broken down by activity area.	3
Figure 1.2 All secondary care cost for all providers for the current fiscal year April 2014 - December 2014 broken down by activity area.	3
2. Elective Areas	4 to 7
Figure 2.1 All first outpatient activity as a percentage under and over the Bradford Districts CCG average per weighted 1000 patients April 2014 - December 2014	4
Figure 2.2 Number of 1st outpatient appointments by Specialty per weight listed 1,000 patients April 2014 - December 2014	5
Figure 2.3 All elective inpatient activity as a percentage under and over the Bradford Districts CCG average per weighted 1000 patients April 2014 - December 2014	6
Figure 2.4 Number of Elective Inpatient appointments by Specialty per weight listed 1,000 patients April 2014 - December 2014	7
3. Non - Elective Areas	8 to 10
Figure 3.1 All non-elective inpatient activity as a percentage under and over the Bradford Districts CCG average per weighted 1000 patients April 2014 - December 2014	8
Figure 3.2 Number of Non Elective Inpatient appointments by Specialty per weight listed 1,000 patients April 2014 - December 2014	9
Figure 3.3 All A&E activity as a percentage under and over the Bradford Districts CCG average per weighted 1000 patients April 2014 - December 2014	10
4. Prescribing	11
Figure 4.1 All prescribing cost as a percentage under and over the Bradford Districts CCG average per weighted 1000 patients	11
5. Urgent Care Area	12 to 13
Figure 5.1 Urgent care activity per weighted 1000 patients April 2014 - December 2014	12
Table 5.2 Urgent care activity per weighted 1000 patients April 2014 - December 2014	13
6. Pathology	14
Figure 6.1 All Pathology activity as a percentage under and over the Bradford Districts CCG average per weighted 1000 patients April 2014 - December 2014	14
7. Radiology	15
Figure 7.1 All Radiology activity as a percentage under and over the Bradford Districts CCG average per weighted 1000 patients April 2014 - December 2014	15
8. GPwSI Activity	16
Figure 8.1 All GPwSI activity as a percentage under and over the Bradford Districts CCG average per weighted 1000 patients April 2014 - December 2014	16

1. Secondary Care Activity and Financial Summary

Trends in secondary care activity and cost

This report presents activity data for your registered patients for A&E attendances, outpatient appointments, elective hospital admissions and non-elective hospital admissions delivered by all secondary care providers who submit data to the Secondary Users Service (SUS).

B83018 - Dr Roberts & Partners

Figure 1.1 All secondary care activity for all providers for the current fiscal year April 2014 - December 2014 broken down by activity area.

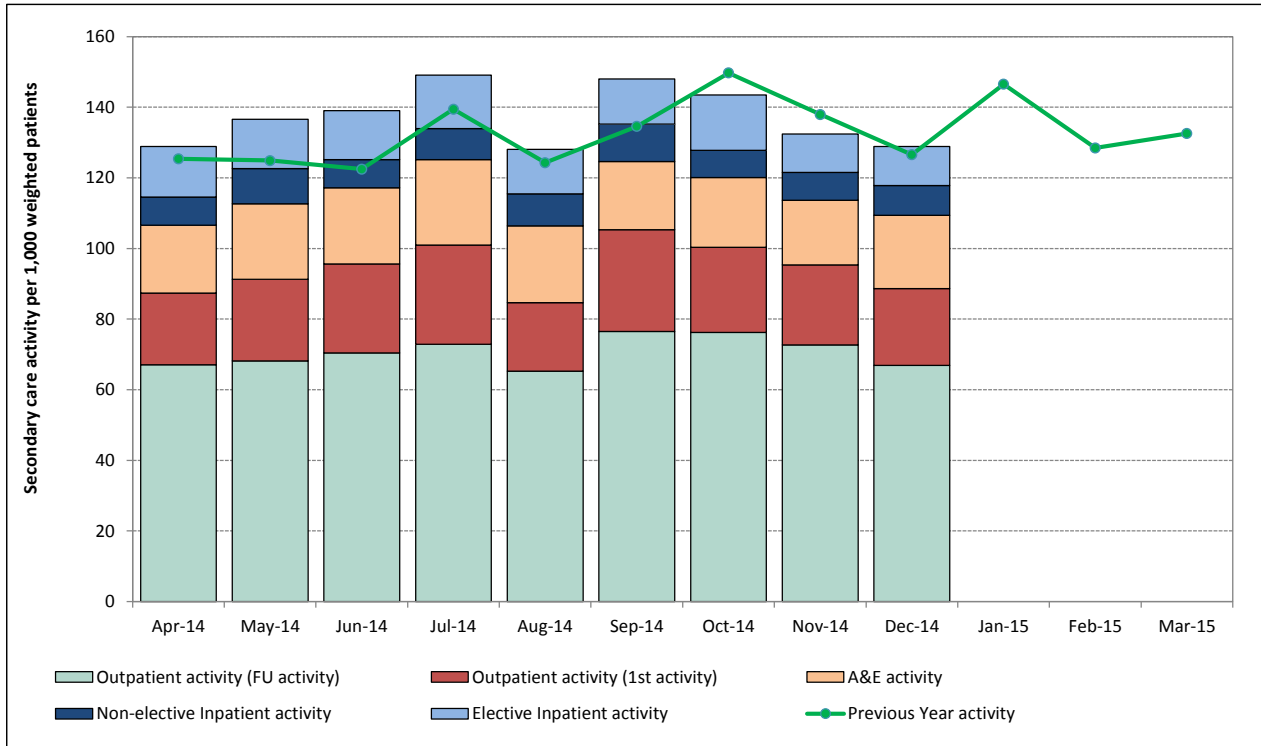
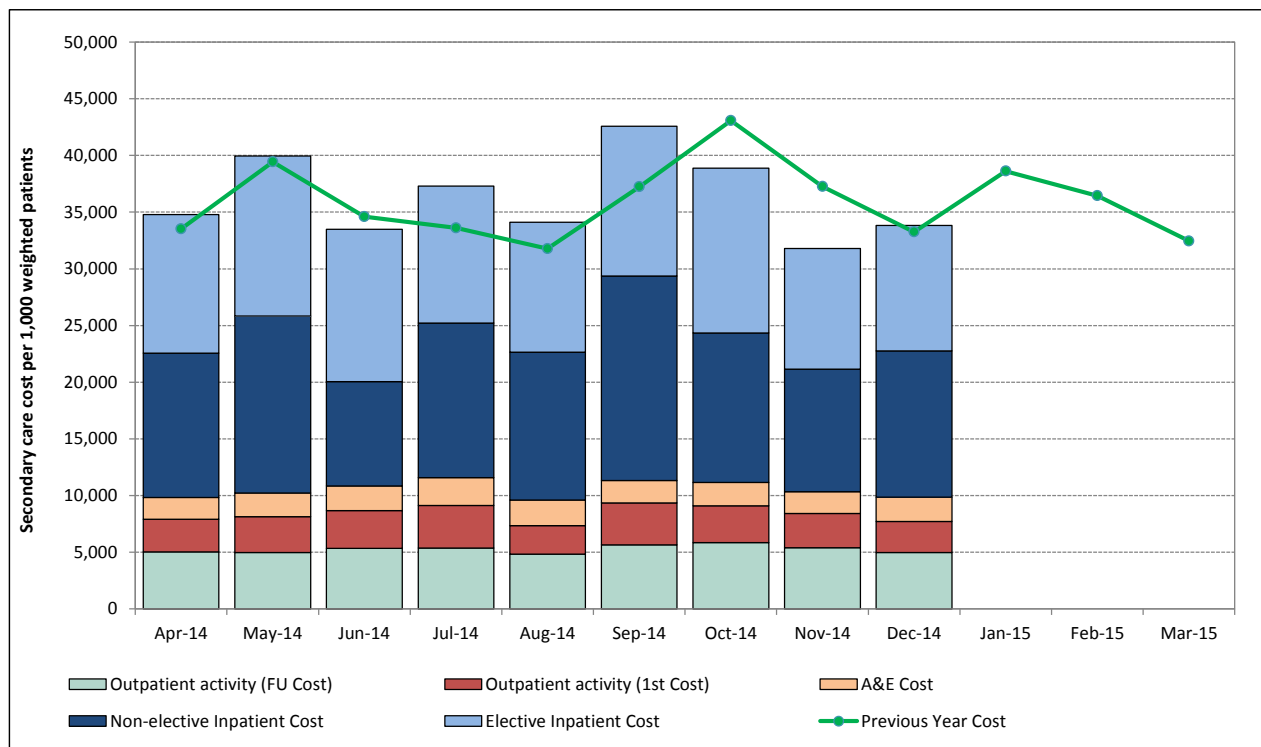


Figure 1.2 All secondary care cost for all providers for the current fiscal year April 2014 - December 2014 broken down by activity area.



2. Elective Areas

First Outpatient Activity

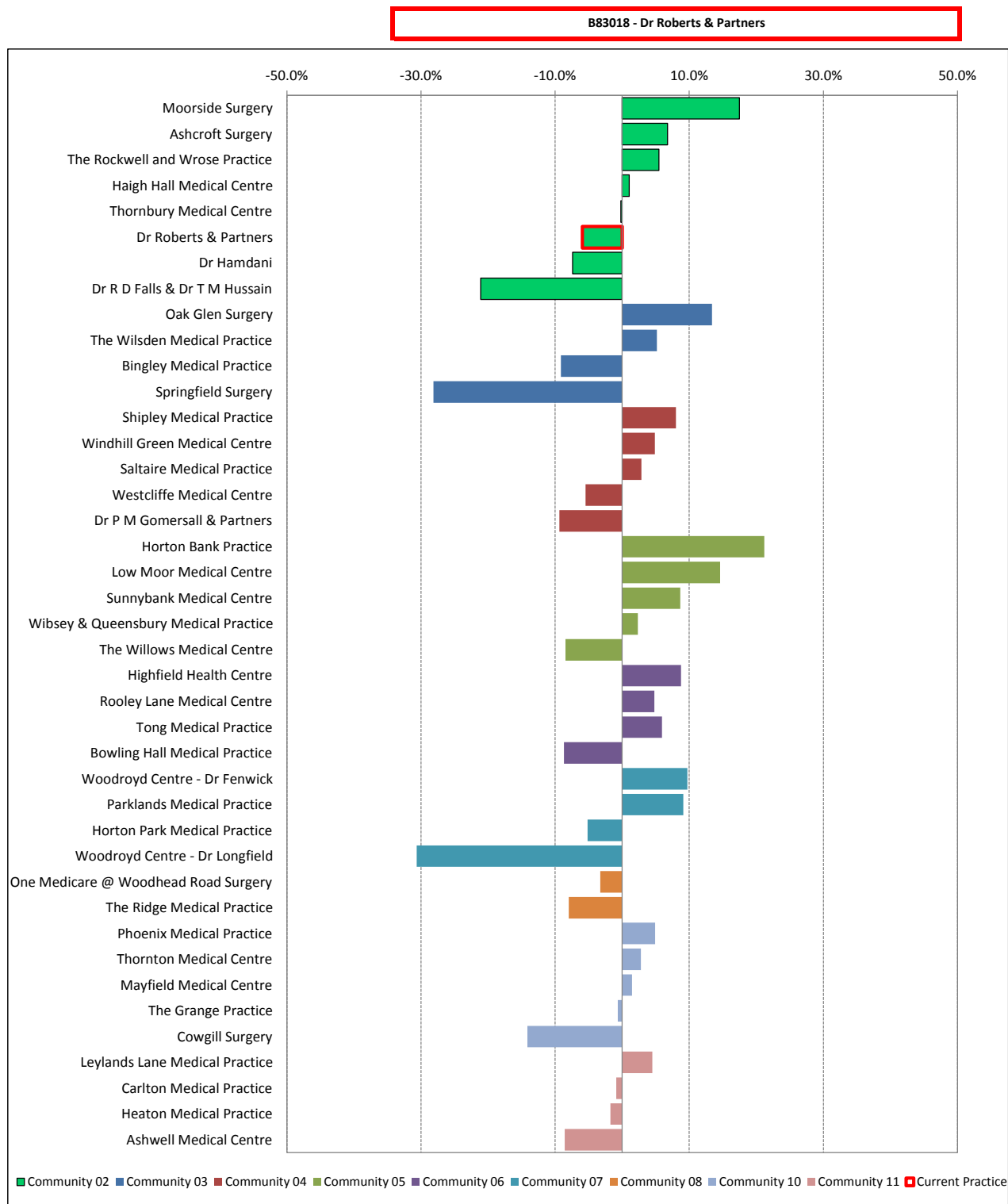
The information in the following graph outlines your practice's First Outpatient activity in comparison to the other practices within the CCG, and provides an indication of whether your practice is over or under the CCG average first outpatient activity

FIRST OUTPATIENT ACTIVITY

Number of First Outpatient appointments in FY 2014/15

2449 (272 per month)

Figure 2.1 All first outpatient activity as a percentage under and over the Bradford Districts CCG average per weighted 1000 patients April 2014 - December 2014



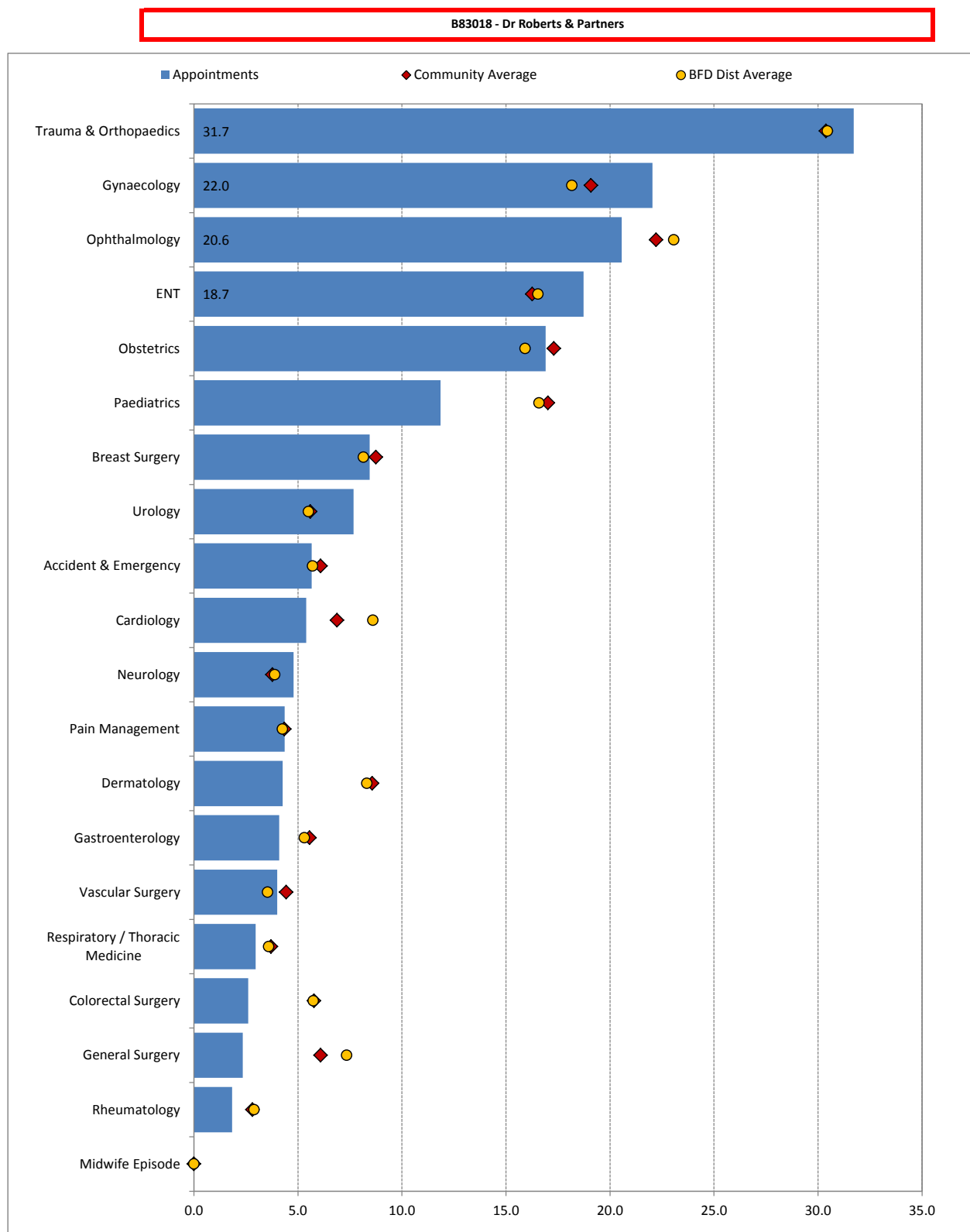
All first outpatient activity as a % under/over Bradford Districts CCG average (per weighted 1000 patients)

2. Elective Areas (cont.)

First Outpatient Activity - by Specialty

The graph displays the Top 20 specialties which has the most appointments for your practice. The appointment data represents the period April 2014 - December 2014 and the Bradford Districts CCG totals have been included for comparison.

Figure 2.2 Number of 1st outpatient appointments by Specialty per weight listed 1,000 patients April 2014 - December 2014



Note: Specialty "Accident & Emergency" represents patients sent to OP after an A&E attendance

2. Elective Areas (cont.)

Elective Inpatient Activity

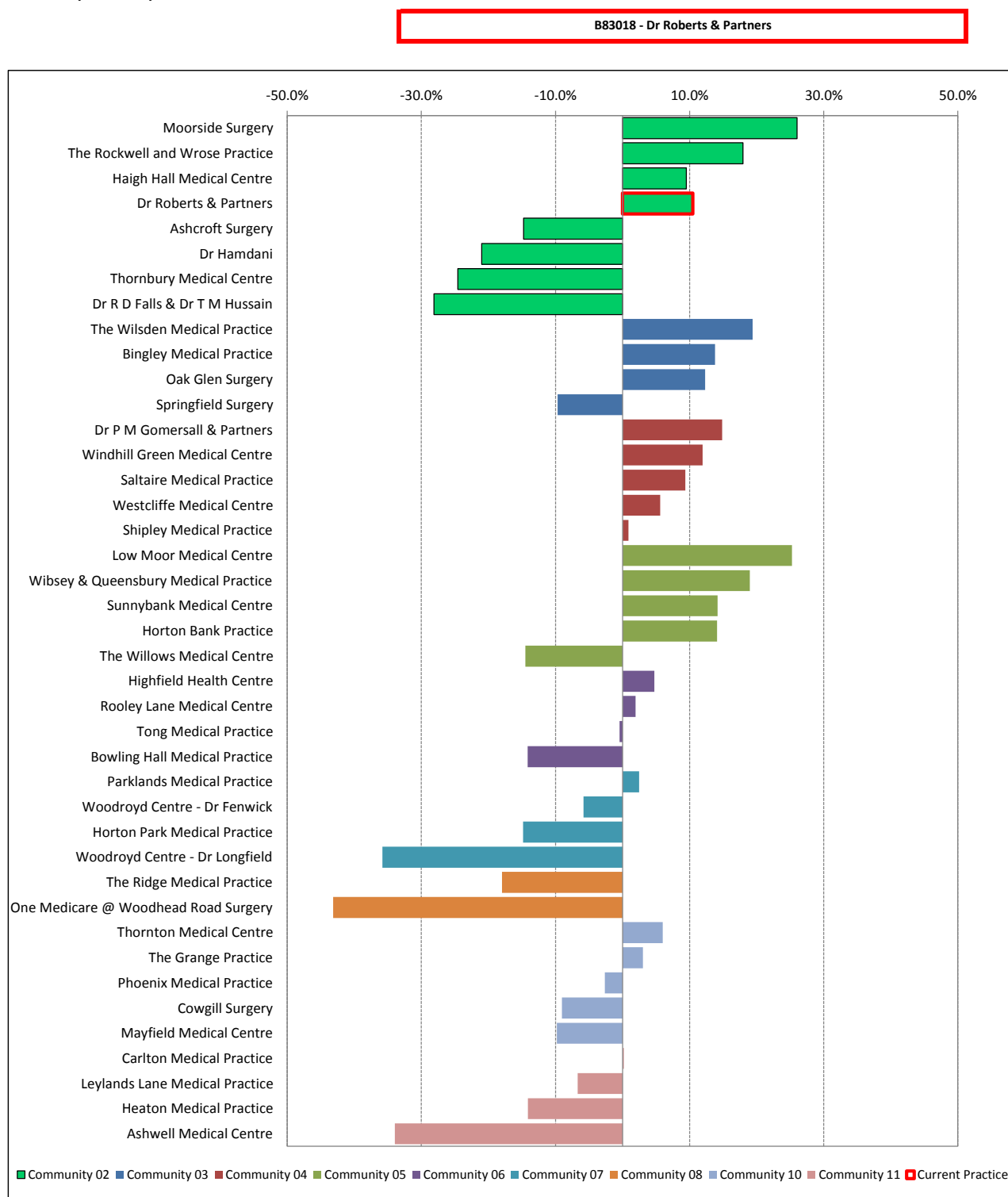
The information in the following graph outlines your practice's elective inpatient activity in comparison to the other practices within the CCG, and provides an indication of whether your practice is over or under the CCG average elective inpatient activity

ELECTIVE INPATIENT ACTIVITY

Number of Elective Inpatient appointments in 2014/15

1383 (154 per month)

Figure 2.3 All elective inpatient activity as a percentage under and over the Bradford Districts CCG average per weighted 1000 patients April 2014 - December 2014



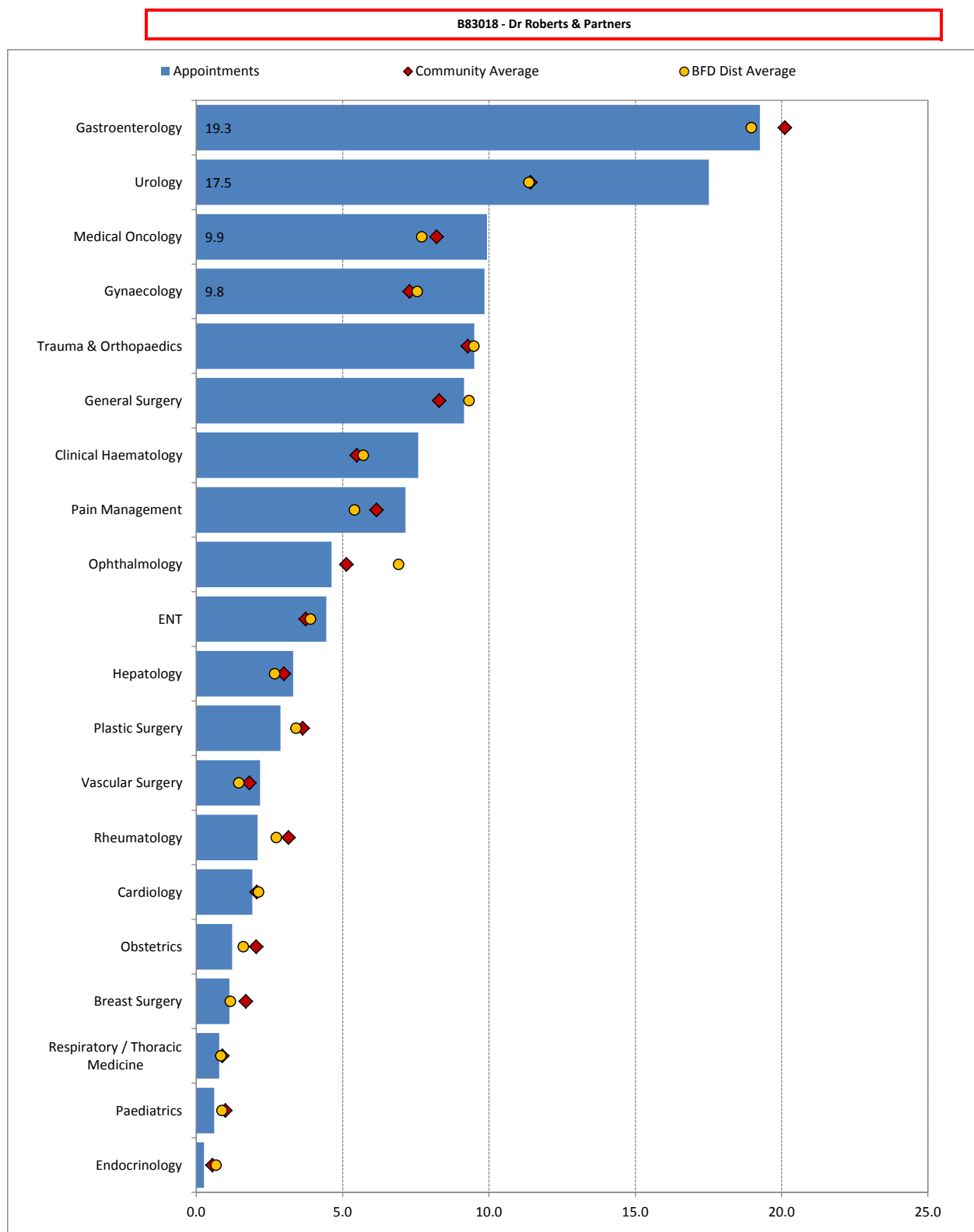
All elective inpatient activity as a % under/over Bradford Districts CCG average (per weighted 1000 patients)

2. Elective Areas (cont.)

Elective Inpatient Activity - by Specialty

The graph displays the Top 20 specialties which has the most appointments for your practice. The appointment data represents the period April 2014 - December 2014 and the Bradford Districts CCG totals have been included for comparison.

Figure 2.4 Number of Elective Inpatient appointments by Specialty per weight listed 1,000 patients April 2014 - December 2014



Note: Specialty "Accident & Emergency" represents patients sent to IP after an A&E attendance

3. Non - Elective Areas

Non - Elective Inpatient Activity

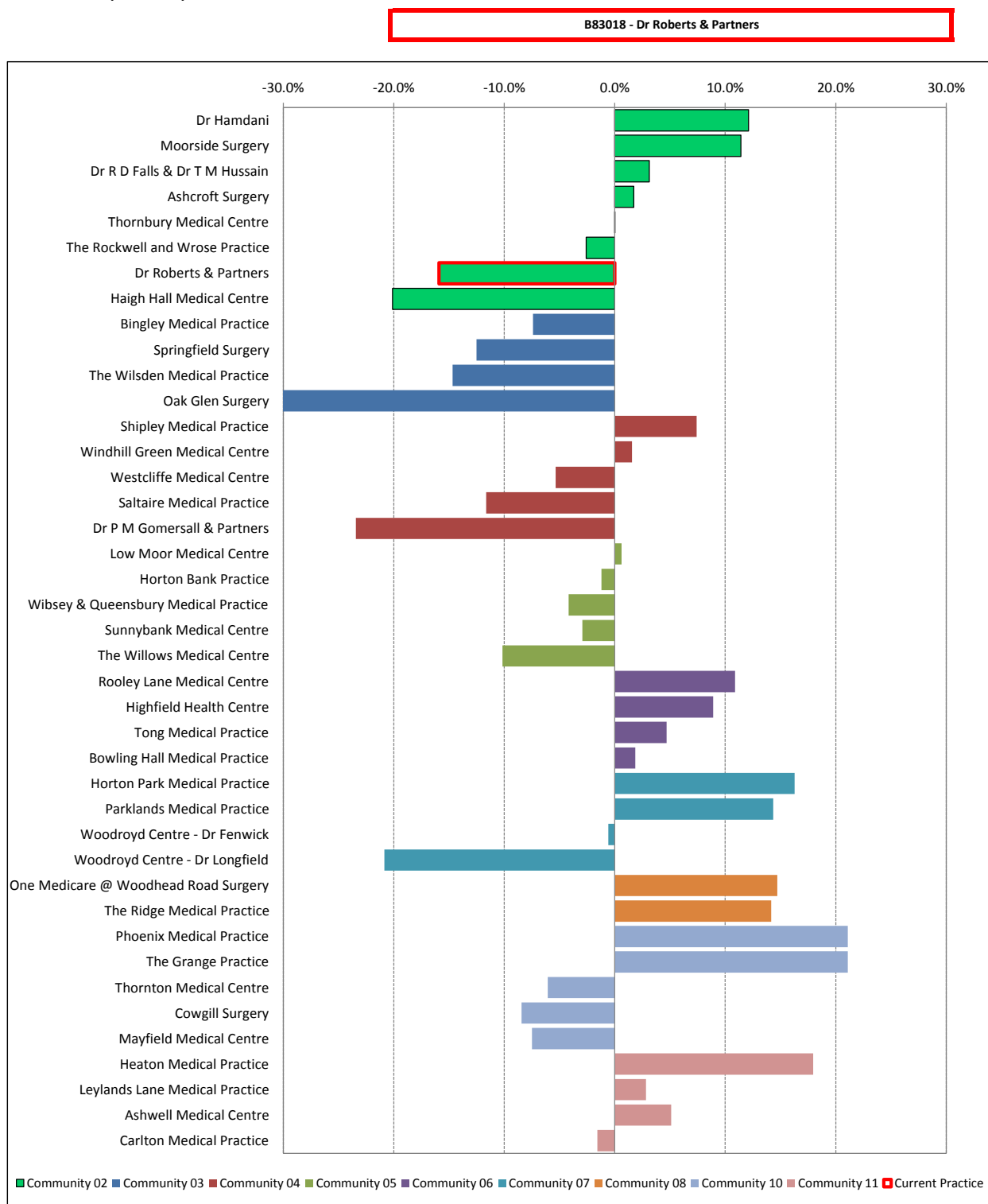
The information in the following graph outlines your practice's non-elective inpatient activity in comparison to the other practices within the CCG, and provides an indication of whether your practice is over or under the CCG average non-elective inpatient activity

NON-ELECTIVE INPATIENT ACTIVITY

Number of Non-Elective Inpatient appointments in FY 2014/15

899

Figure 3.1 All non-elective inpatient activity as a percentage under and over the Bradford Districts CCG average per weighted 1000 patients April 2014 - December 2014



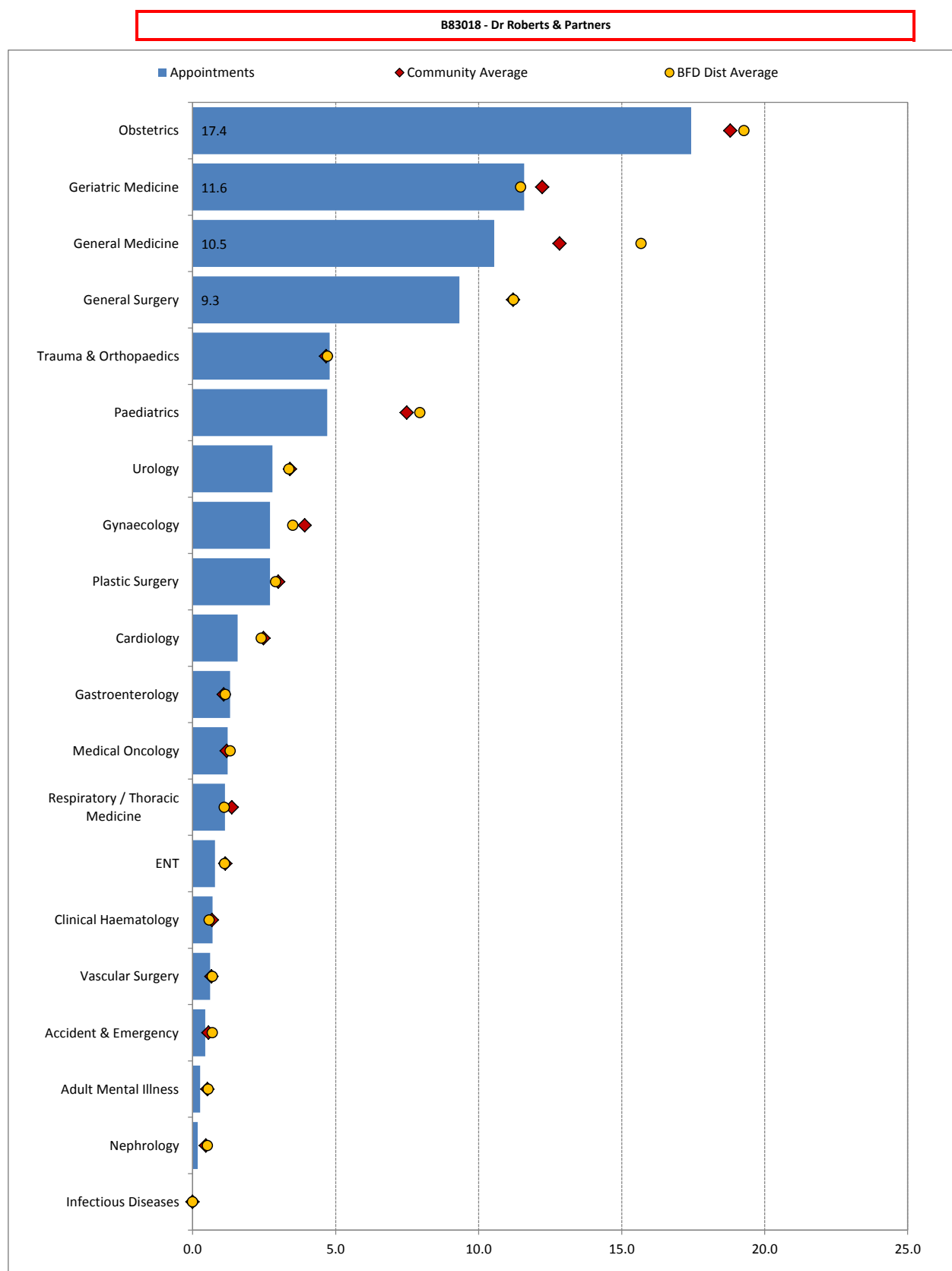
Non-Elective inpatient activity as a % under/over Bradford Districts CCG average (per weighted 1000 patients)

3. Non - Elective Areas (cont.)

Non Elective Inpatient Activity - by Specialty

The graph displays the Top 20 specialties which has the most appointments for your practice. The appointment data represents the period April 2014 - December 2014 and the Bradford Districts CCG totals have been included for comparison.

Figure 3.2 Number of Non Elective Inpatient appointments by Specialty per weight listed 1,000 patients April 2014 - December 2014



3. Non - Elective Areas (cont.)

A&E attendances

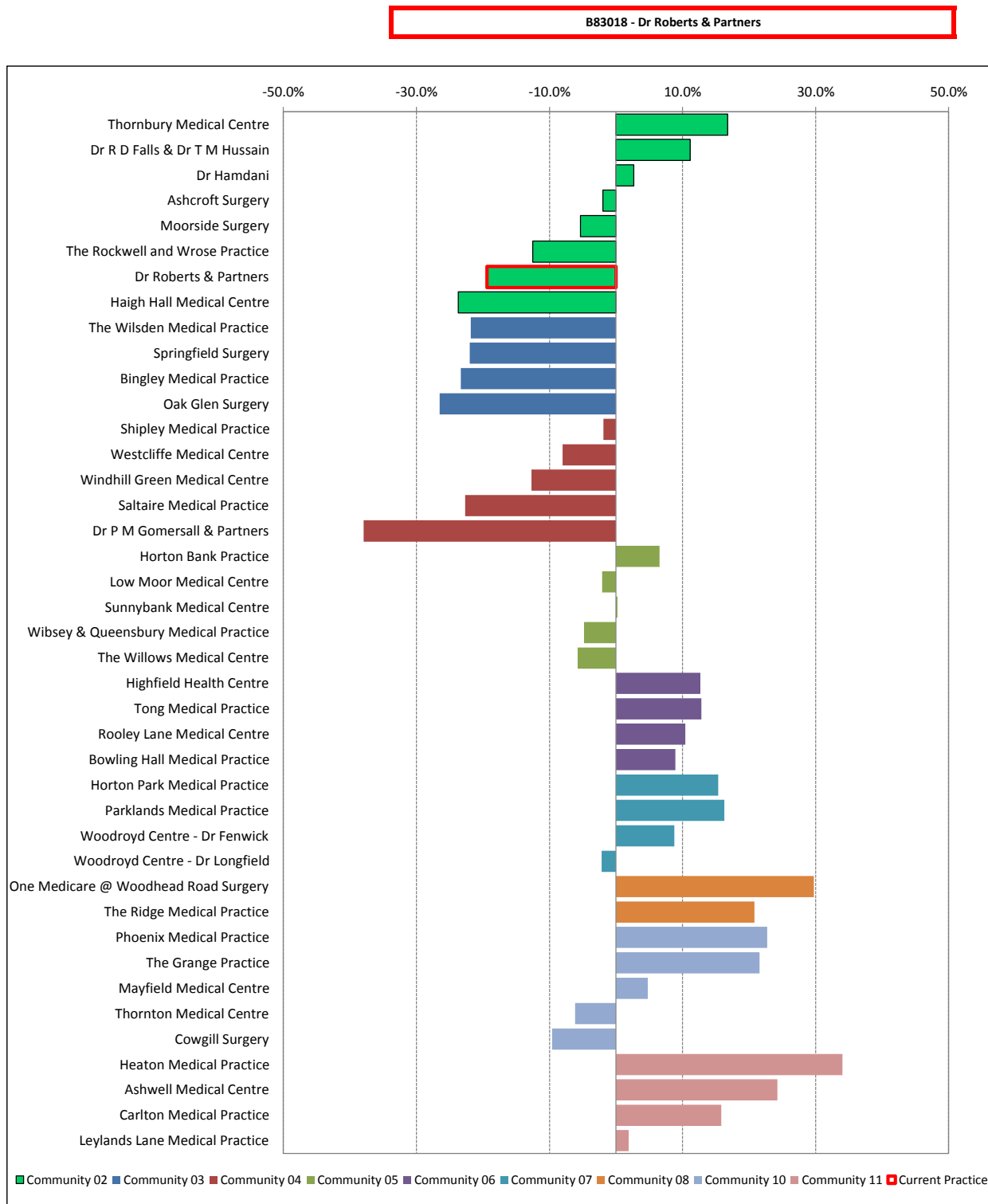
The information in the following graph outlines your practice's A&E activity in comparison to the other practices within the CCG, and provides an indication of whether your practice is over or under the CCG average A&E activity

ACCIDENT & EMERGENCY ACTIVITY

Number of A&E attendances in FY 2014/15

2138 (238 per month)

Figure 3.3 All A&E activity as a percentage under and over the Bradford Districts CCG average per weighted 1000 patients April 2014 - December 2014



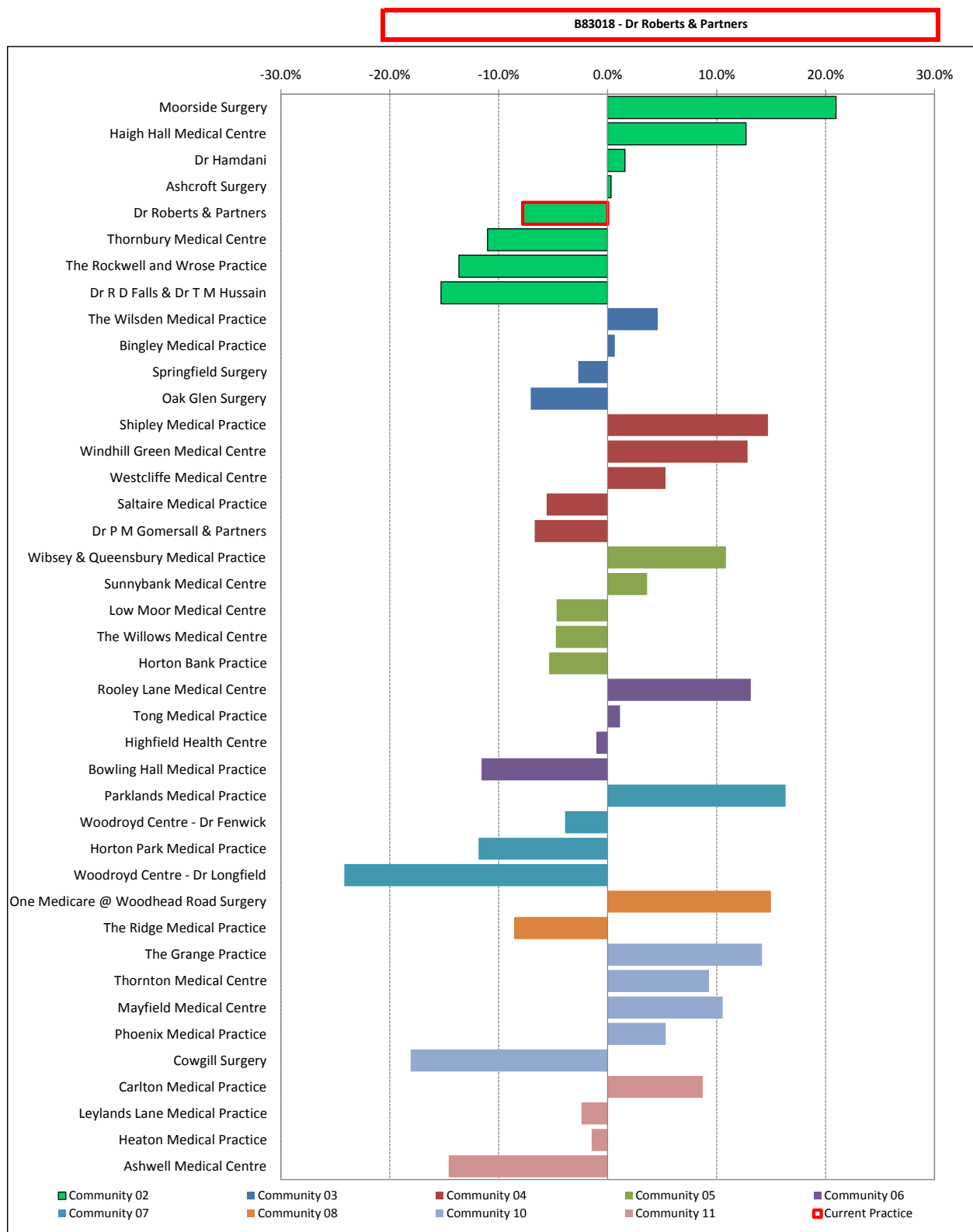
A&E attendances as a % under/over Bradford Districts CCG average (per weighted 1000 patients)

4. Prescribing

Prescribing Budget

The information in the following graph outlines your practice's prescribing cost in comparison to the other practices within the CCG, and provides an indication of whether your practice is over or under the CCG average prescribing cost

Figure 4.1 All prescribing cost as a percentage under and over the Bradford Districts CCG average per weighted 1000 patients



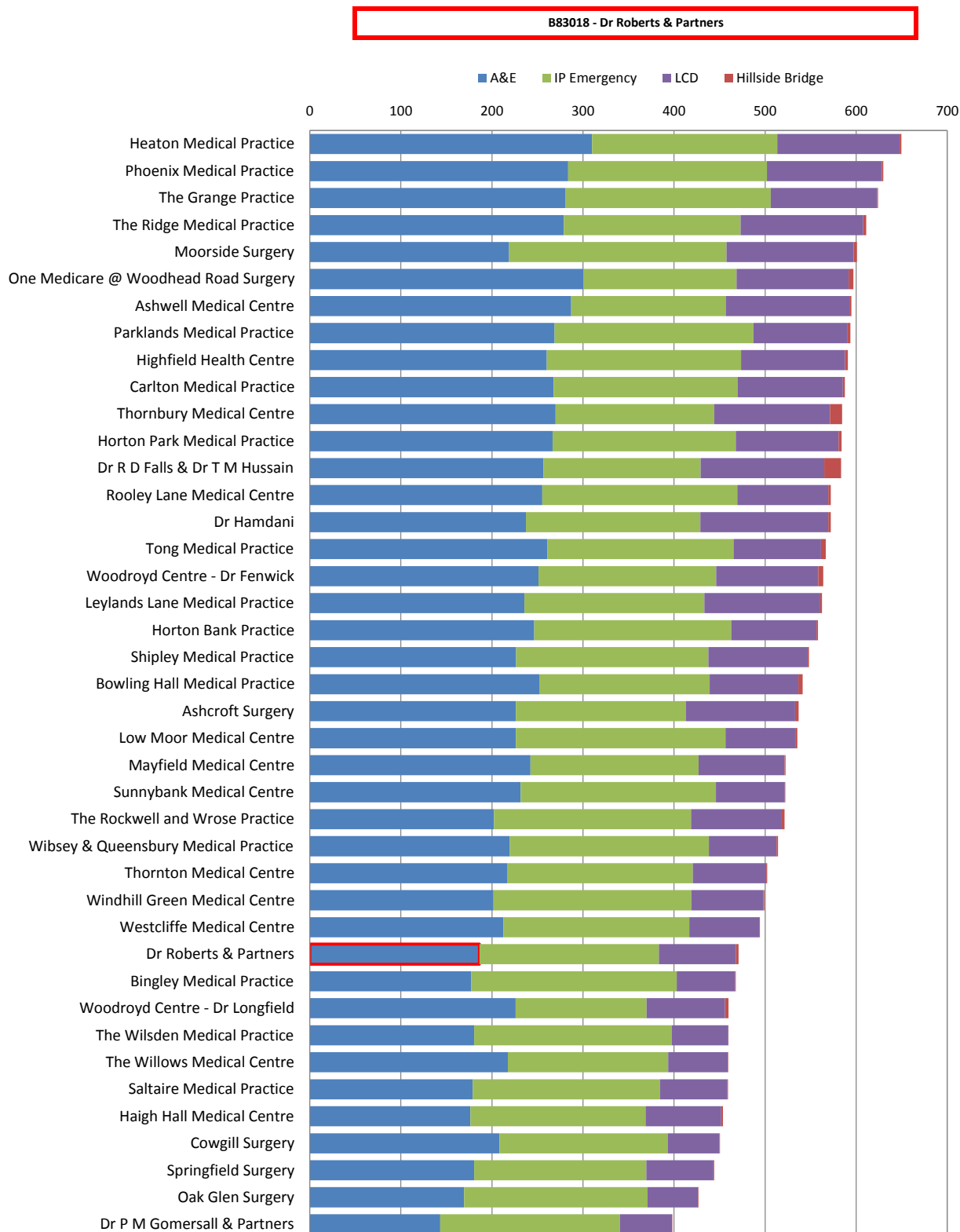
5. Urgent Care Area

Urgent Care

The information in the following graph outlines your practice's urgent care data in comparison to the other practices within the CCG

URGENT CARE ACTIVITY

Figure 5.1 Urgent care activity per weighted 1000 patients April 2014 - December 2014



Urgent Care Activity of all practices that comprise of Bradford Districts CCG (per weighted 1000 patients)

5. Urgent Care Area

Urgent Care

The information in the following graph outlines your practice's urgent care data in comparison to the other practices within the CCG

URGENT CARE ACTIVITY

Table 5.2 Urgent care activity per weighted 1000 patients April 2014 - December 2014

B83018 - Dr Roberts & Partners

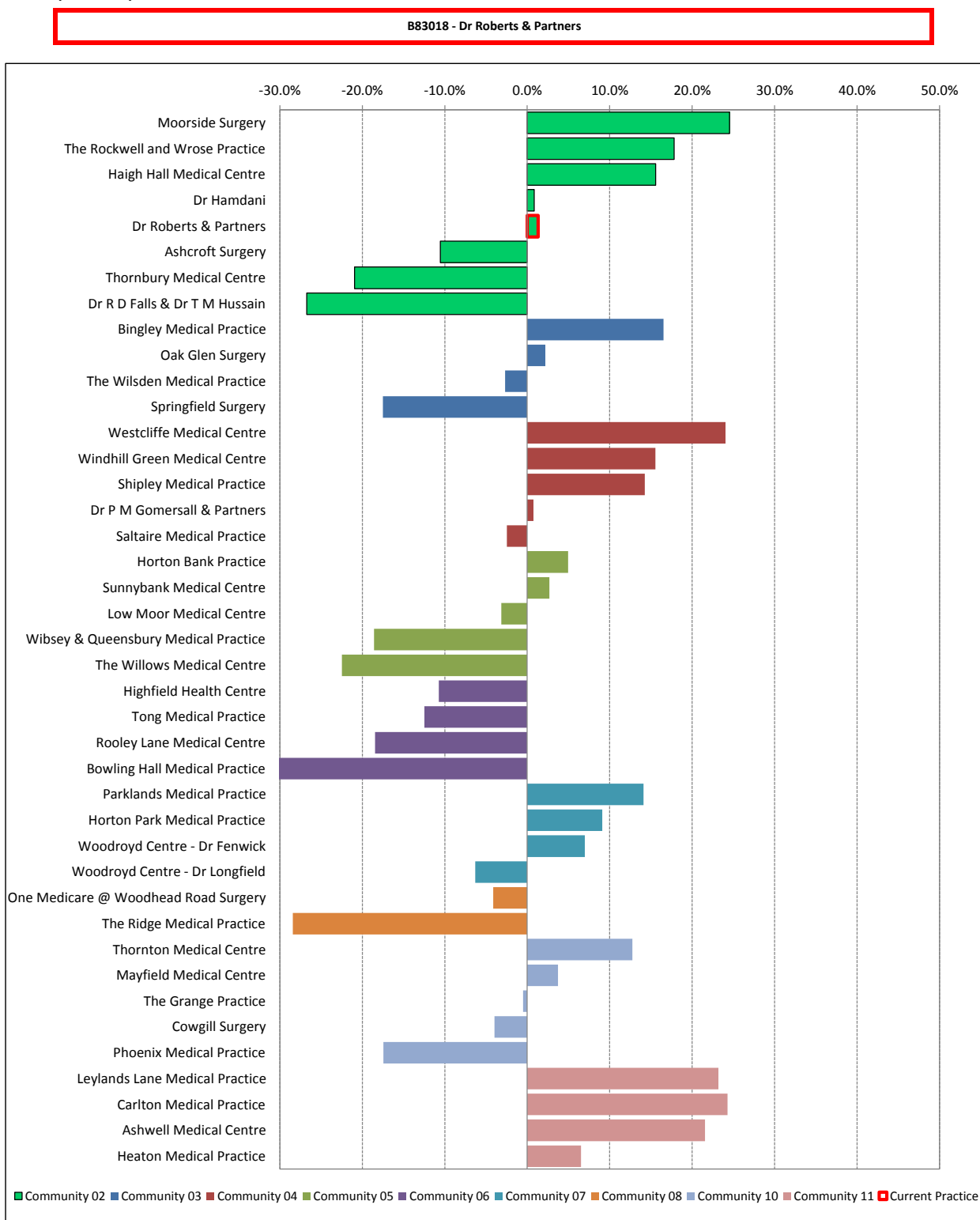
Practice	Practice Name	A&E	IP Emergency	LCD	Hillside Bridge	Total
B83007	Heaton Medical Practice	309.8	203.5	134.5	1.7	649.6
B83071	Phoenix Medical Practice	283.7	218.3	126.2	1.7	629.8
B83050	The Grange Practice	281.0	225.2	117.0	0.9	624.0
B83055	The Ridge Medical Practice	278.9	194.1	134.7	3.2	611.0
B83056	Moorside Surgery	218.9	238.8	139.4	3.7	600.9
B83631	One Medicare @ Woodhead Road Surgery	300.2	168.5	123.1	5.1	596.8
B83641	Ashwell Medical Centre	287.2	169.6	135.9	2.0	594.6
B83010	Parklands Medical Practice	268.8	218.2	103.7	3.0	593.7
B83044	Highfield Health Centre	260.3	213.2	114.3	3.2	590.9
B83012	Carlton Medical Practice	267.8	202.0	115.5	2.2	587.6
B83005	Thornbury Medical Centre	269.9	174.0	127.3	13.3	584.5
B83035	Horton Park Medical Practice	266.6	201.1	112.9	3.4	584.0
B83032	Dr R D Falls & Dr T M Hussain	256.6	172.6	135.8	18.4	583.4
B83042	Rooley Lane Medical Centre	255.4	213.9	100.2	2.7	572.2
Y01118	Dr Hamdani	237.3	191.5	140.6	2.8	572.1
B83015	Tong Medical Practice	260.8	204.6	96.1	5.1	566.6
B83011	Woodroyd Centre - Dr Fenwick	251.2	195.2	112.0	5.4	563.8
B83038	Leylands Lane Medical Practice	235.7	197.6	127.2	2.1	562.5
B83017	Horton Bank Practice	246.4	216.3	93.7	1.8	558.1
B83063	Shipley Medical Practice	226.7	211.1	108.8	1.6	548.2
B83041	Bowling Hall Medical Practice	251.9	187.2	97.6	4.6	541.2
B83062	Ashcroft Surgery	226.4	186.6	120.0	4.0	536.9
B83029	Low Moor Medical Centre	226.3	230.2	77.4	1.7	535.5
B83045	Mayfield Medical Centre	242.2	184.7	94.5	1.0	522.5
B83009	Sunnybank Medical Centre	231.6	214.4	75.7	0.5	522.3
B83064	The Rockwell and Wrose Practice	202.2	216.4	99.5	3.1	521.3
B83028	Wibsey & Queensbury Medical Practice	219.8	218.4	74.4	1.5	514.1
B83030	Thornton Medical Centre	216.8	203.9	80.6	1.1	502.3
B83039	Windhill Green Medical Centre	201.7	217.3	79.1	1.2	499.4
B83013	Westcliffe Medical Centre	212.4	204.3	76.8	0.9	494.3
B83018	Dr Roberts & Partners	186.3	197.1	84.6	2.7	470.7
B83014	Bingley Medical Practice	177.1	225.9	64.0	0.8	467.7
B83043	Woodroyd Centre - Dr Longfield	226.1	143.8	86.1	3.9	459.8
B83037	The Wilsden Medical Practice	180.5	217.0	61.9	0.3	459.8
B83020	The Willows Medical Centre	217.5	176.1	65.4	0.5	459.6
B83040	Saltaire Medical Practice	178.8	205.5	74.3	0.6	459.2
B83054	Haigh Hall Medical Centre	176.4	192.2	83.2	1.8	453.6
B83049	Cowgill Surgery	208.5	184.5	56.9	0.5	450.4
B83067	Springfield Surgery	180.6	188.9	73.8	0.8	444.2
B83031	Oak Glen Surgery	169.5	201.4	55.5	0.6	427.1
B83022	Dr P M Gomersall & Partners	143.3	197.4	57.2	0.2	398.1

6. Pathology

The information in the following graph outlines your practice's Pathology activity in comparison to the other practices within the CCG, and provides an indication of whether your practice is over or under the CCG average pathology activity

PATHOLOGY ACTIVITY

Figure 6.1 All Pathology activity as a percentage under and over the Bradford Districts CCG average per weighted 1000 patients April 2014 - December 2014



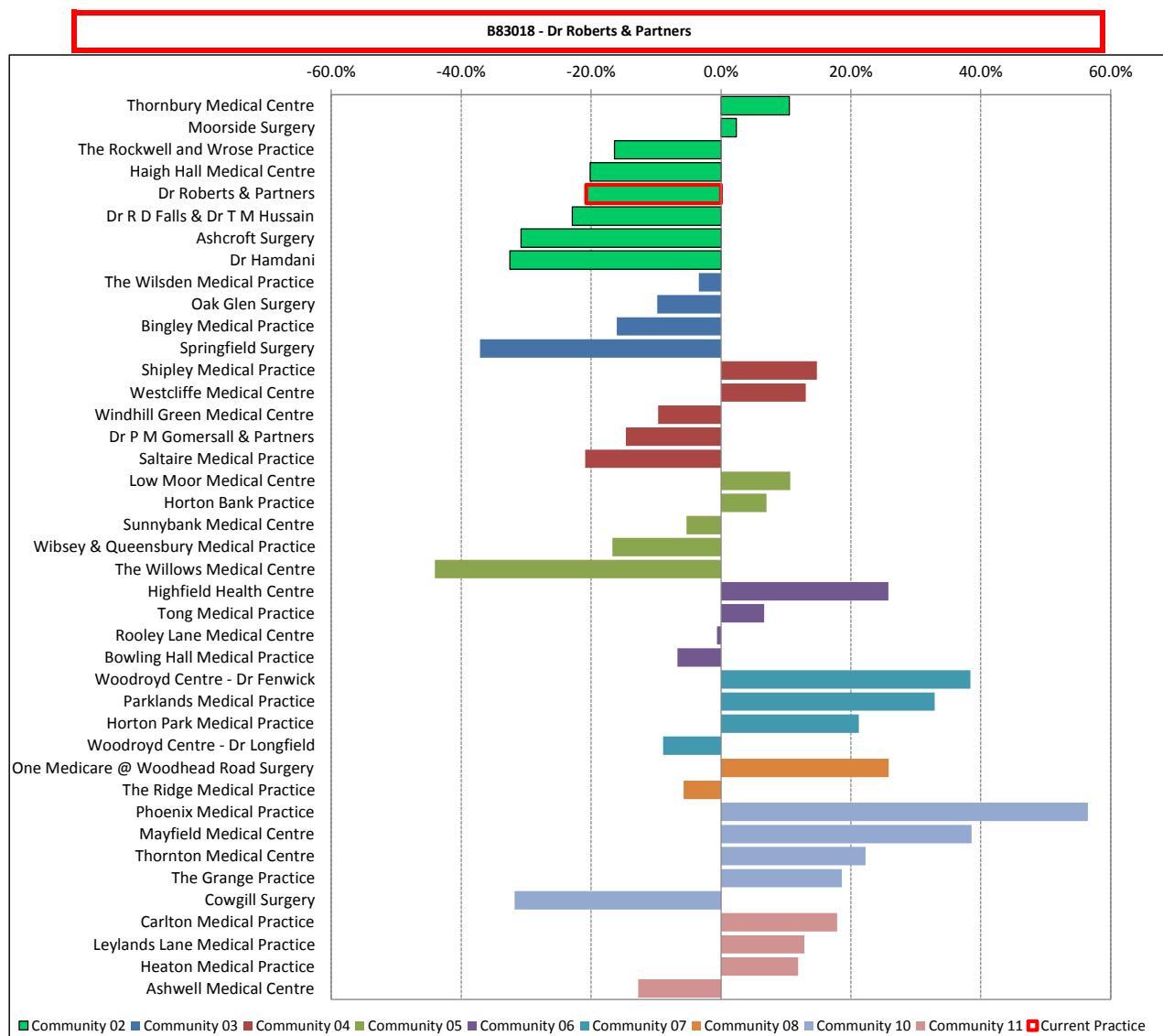
Pathology activity as a % under/over Bradford Districts CCG average (per weighted 1000 patients)

7. Radiology

The information in the following graph outlines your practice's Radiology activity in comparison to the other practices within the CCG, and provides an indication of whether your practice is over or under the CCG average radiology activity

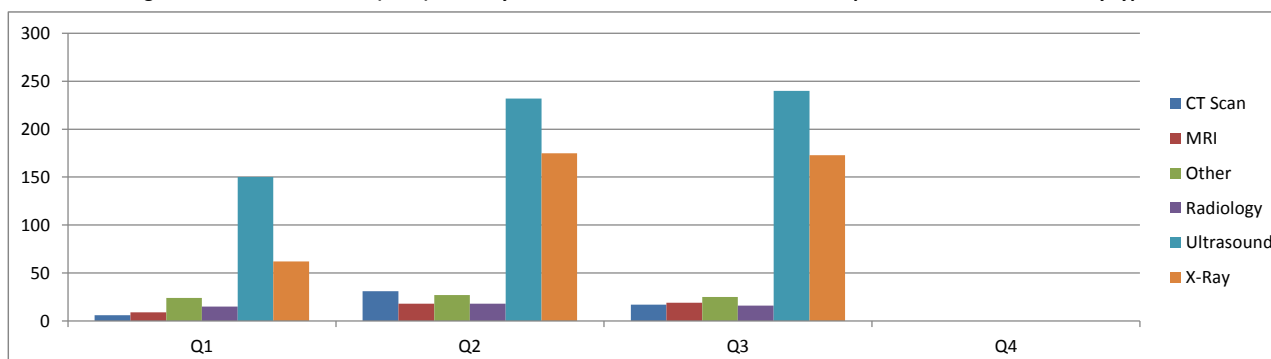
RADIOLOGY ACTIVITY

Figure 7.1 All Radiology activity as a percentage under and over the Bradford Districts CCG average per weighted 1000 patients April 2014 - December 2014



Radiology activity as a % under/over Bradford Districts CCG average (per weighted 1000 patients)

Figure 7.2 Number of scans (total) made by B83018 - Dr Roberts & Partners from April 2014 - December 2014 by type.



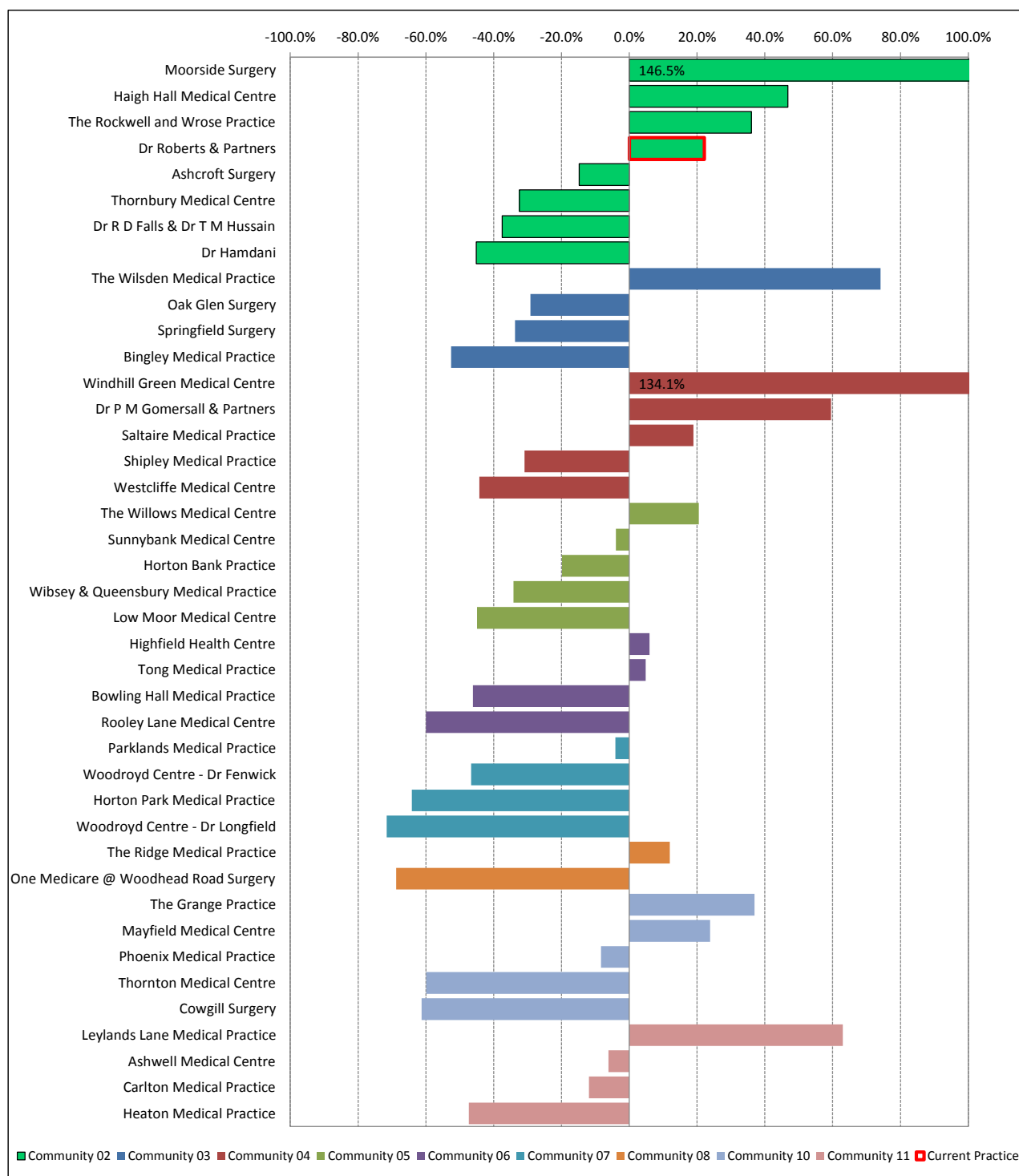
8. GPwSI Activity

The information in the following graph outlines your practice's GPwSI activity in comparison to the other practices within the CCG, and provides an indication of whether your practice is over or under the CCG average pathology activity

GPwSI ACTIVITY

**Figure 8.1 All GPwSI activity as a percentage under and over the Bradford Districts CCG average per weighted 1000 patients
April 2014 - December 2014**

B83018 - Dr Roberts & Partners



GPwSI activity as a % under/over Bradford Districts CCG average (per weighted 1000 patients)